

Use of MATLAB in post-processing of offshore measurements



Statoil. The Power of Possible

Presentation outline

- Who we are – Statoil and Wellhead Fatigue Group
- Wellhead fatigue – why is it an issue?
- Offshore measurements
- Our process – from raw data to a report
- Why MATLAB?
- Questions

Who are we?

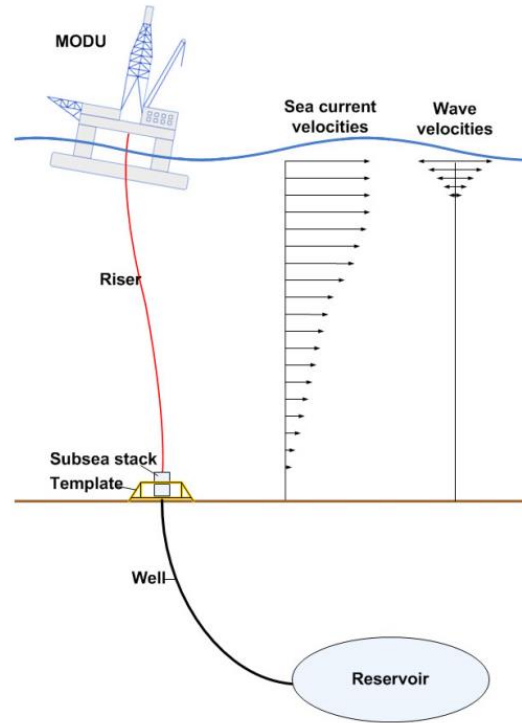
Statoil



Wellhead Fatigue Group

- Part of the Research and Technology department
- Established in 2008
- Wellhead fatigue analysis is performed to assess the capacity of subsea wellheads prior to drilling operations
- Wellhead fatigue analysis based on DNV method statement
- <https://rules.dnvgl.com/docs/pdf/DNVGL/RP/2015-04/DNVGL-RP-0142.pdf>

Why is wellhead fatigue an issue?



Source: DNV Method Statement

Drilling operation

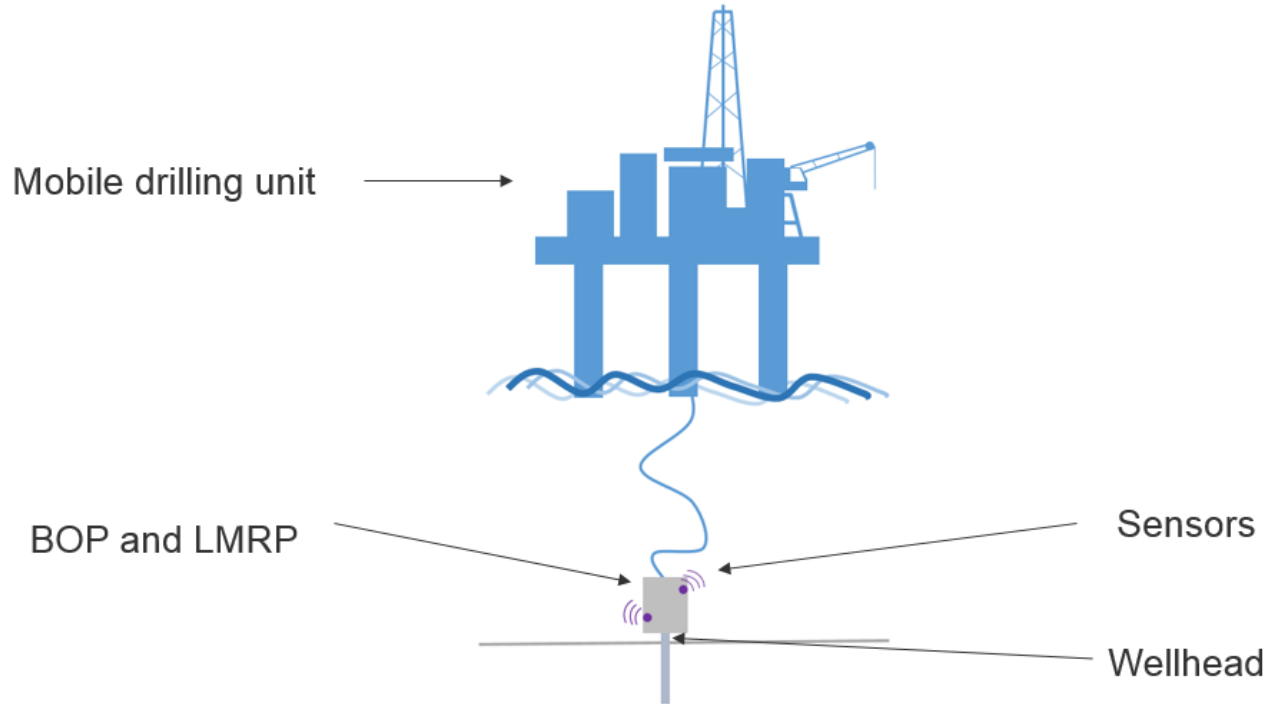


What do we do?

Measurement systems

- Online systems
 - Continuously measure data at different locations on the BOP
 - Data is automatically processed, stored and transported to shore
 - Used when fatigue accumulation needs to be monitored throughout the campaign
- Autonomous systems
 - Consist of battery powered sensor packages
 - Data is retrieved at regular intervals and post processed at the end of campaign

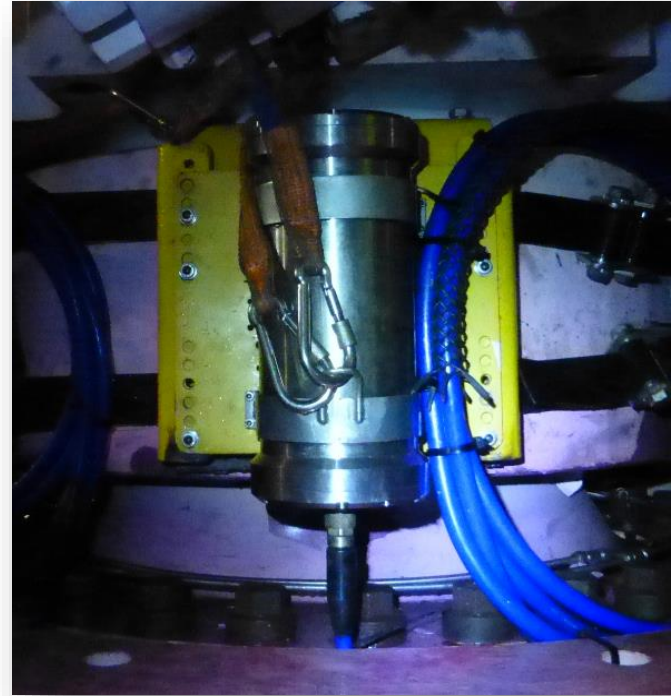
Online measurement systems



Sensors: MRU – motion reference unit



MRU on LMRP



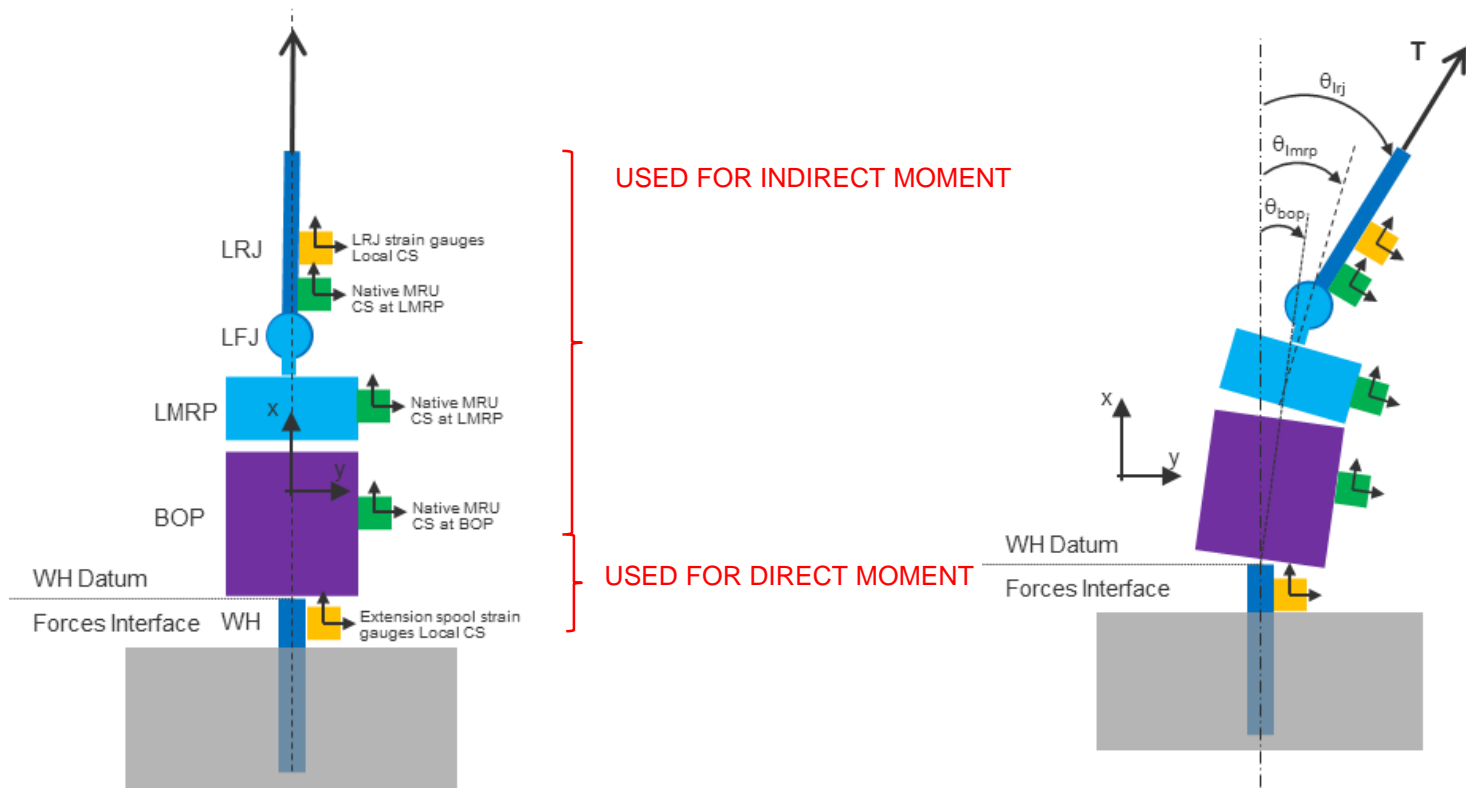
MRU on BOP

Sensors: LVDT



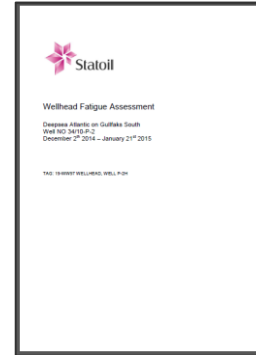
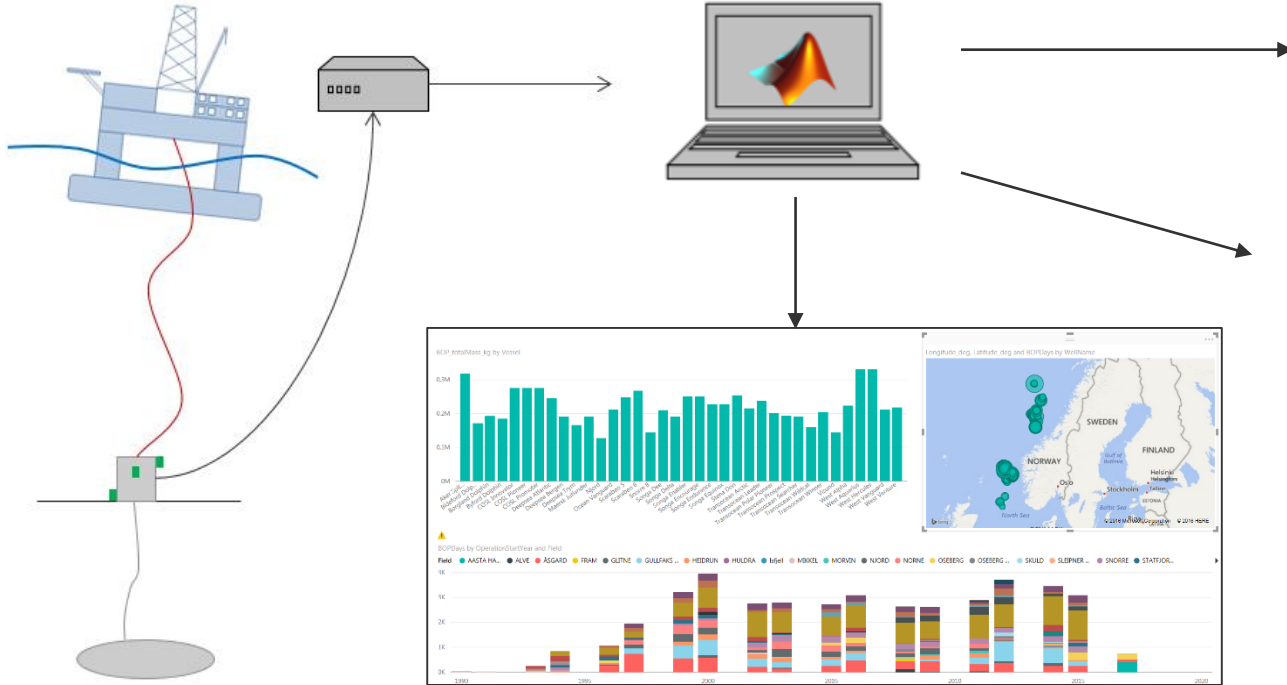
LVDT on BOP connector

WHF calculation methods



Our process

Measurements



WELL ANALYSIS

Manage WH Fatigue Analyses

New Analyses | Ongoing Analyses | Completed Analyses

New Analysis

Open personal list settings

Drag a column header and drop it here to group by that column

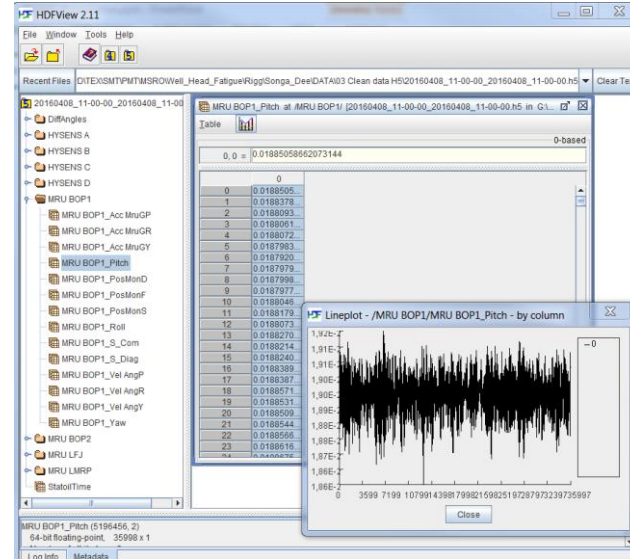
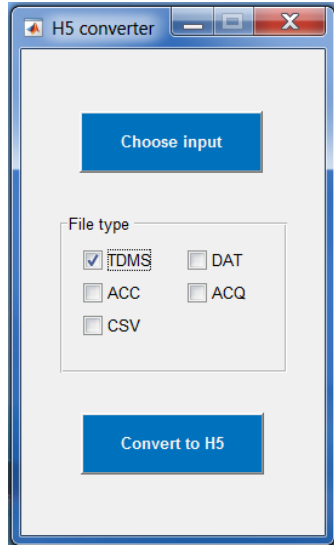
| Ref # | Priority | Field | Well | Title | Next Date | Type | Template |
|-------|----------|--------|-----------------|-----------------|-----------|--------|----------|
| 0047 | 1 | TORDIS | NO 347-1-5 | NO 347-1-5 | Not set | Normal | No |
| 0008 | 2 | ÅSGARD | NO 6507/11-Y-1 | NO 6507/11-Y-1 | Not set | Normal | Yes |
| 0031 | 3 | ÅSGARD | NO 6506/11-F-3 | NO 6506/11-F-3 | Not set | Normal | Yes |
| 0007 | 4 | ÅSGARD | NO 6506/12-P-2 | NO 6506/12-P-2 | Not set | Normal | Yes |
| 0011 | 5 | ÅSGARD | NO 6506/12-N-1 | NO 6506/12-N-1 | Not set | Normal | Yes |
| 0032 | 6 | ÅSGARD | NO 6506/12-K-4 | NO 6506/12-K-4 | Not set | Normal | Yes |
| 0030 | 7 | ÅSGARD | NO 6506/12-NB-1 | NO 6506/12-NB-1 | Not set | Normal | Yes |
| 0029 | 8 | ÅSGARD | NO 6506/12-P-4 | NO 6506/12-P-4 | Not set | Normal | Yes |
| 0012 | 11 | ÅSGARD | NO 6506/12-N-3 | NO 6506/12-N-3 | Not set | Normal | Yes |
| 0013 | 12 | ÅSGARD | NO 6506/12-M-4 | NO 6506/12-M-4 | Not set | Normal | Yes |

Handling raw data

- There are several suppliers of measurement systems, each offering a different sensor set-up and providing the data in a predefined format
- Measurement data provided in several formats including:
 - TDMS files
 - ACQ files
 - PI data base
 - CSV files
 - ACC files
 - DAT files

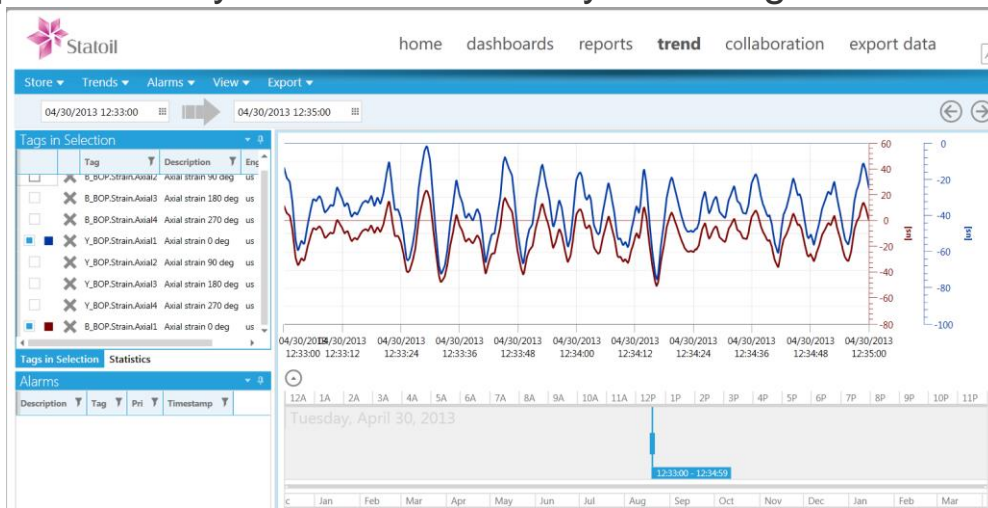
Handling raw data – H5

- Using MATLAB's HDF5 support we developed a set of converters allowing us to get the data we receive from vendors to the predefined structure in a H5 file



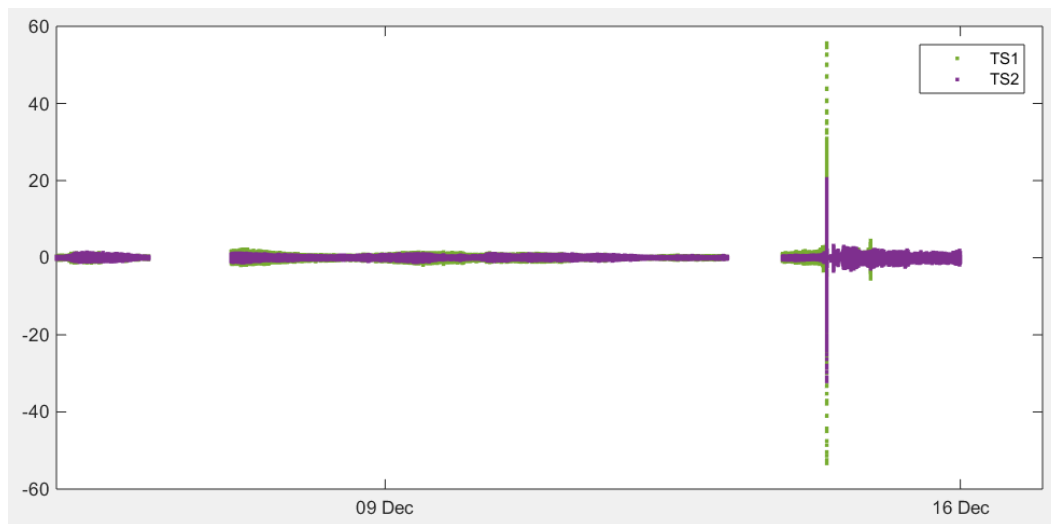
PI database

- In case of one project, the data is provided not as files but in a database
- White papers: <https://pisquare.osisoft.com/docs/DOC-1305>
- The white paper published by OSISoft lists 8 ways of using PI Data with MATLAB

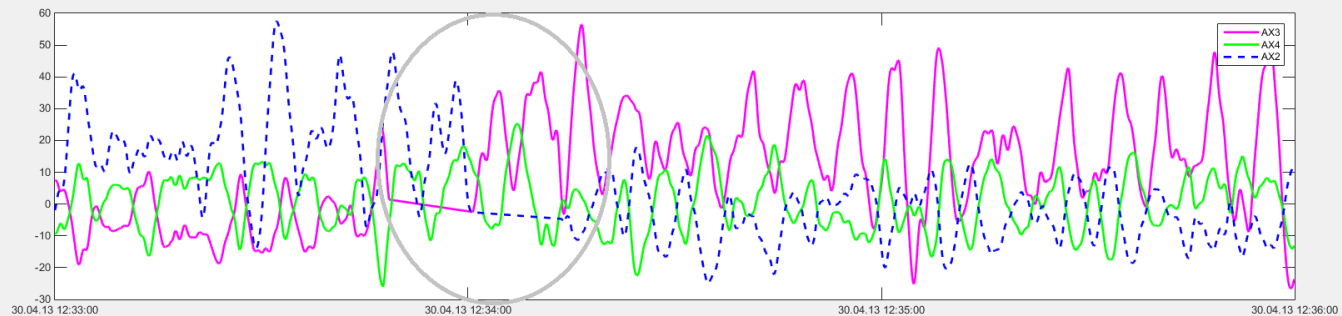
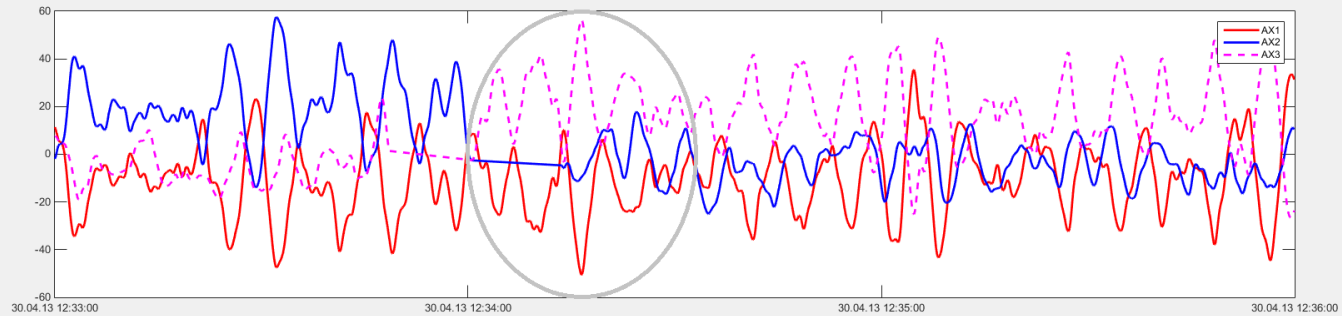


Challenge – data quality

- The quality of provided data differs between sensors and vendors
- We encounter missing values, spikes, asynchronous timeseries

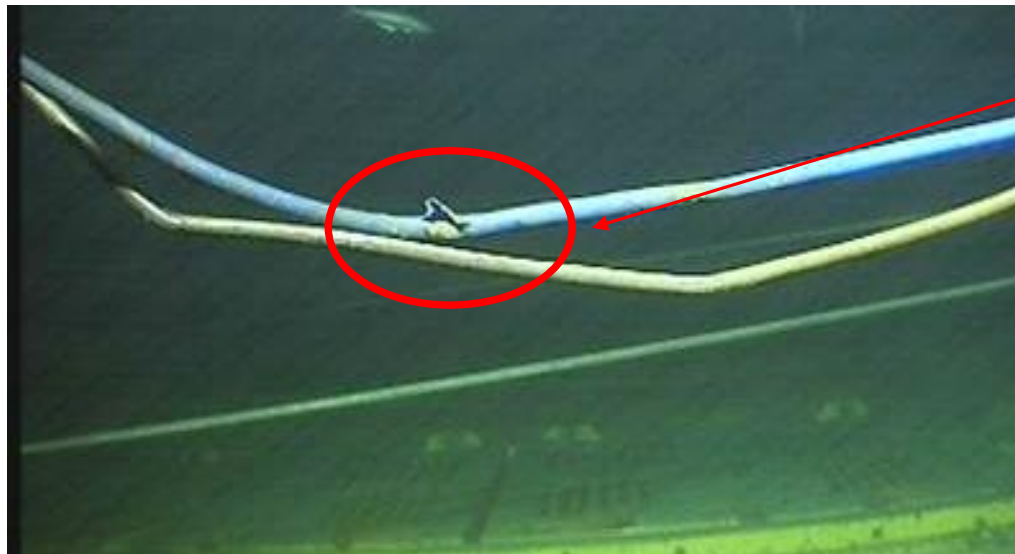


Challenge – data quality



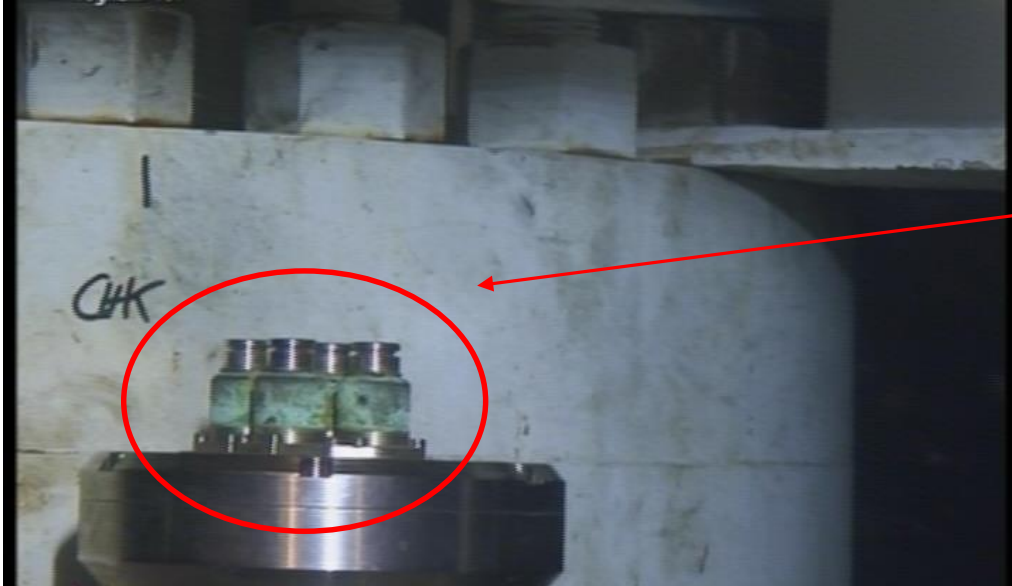
Challenge – missing data

- Due to the harsh environment offshore we encounter hardware malfunctions that lead to loss of data



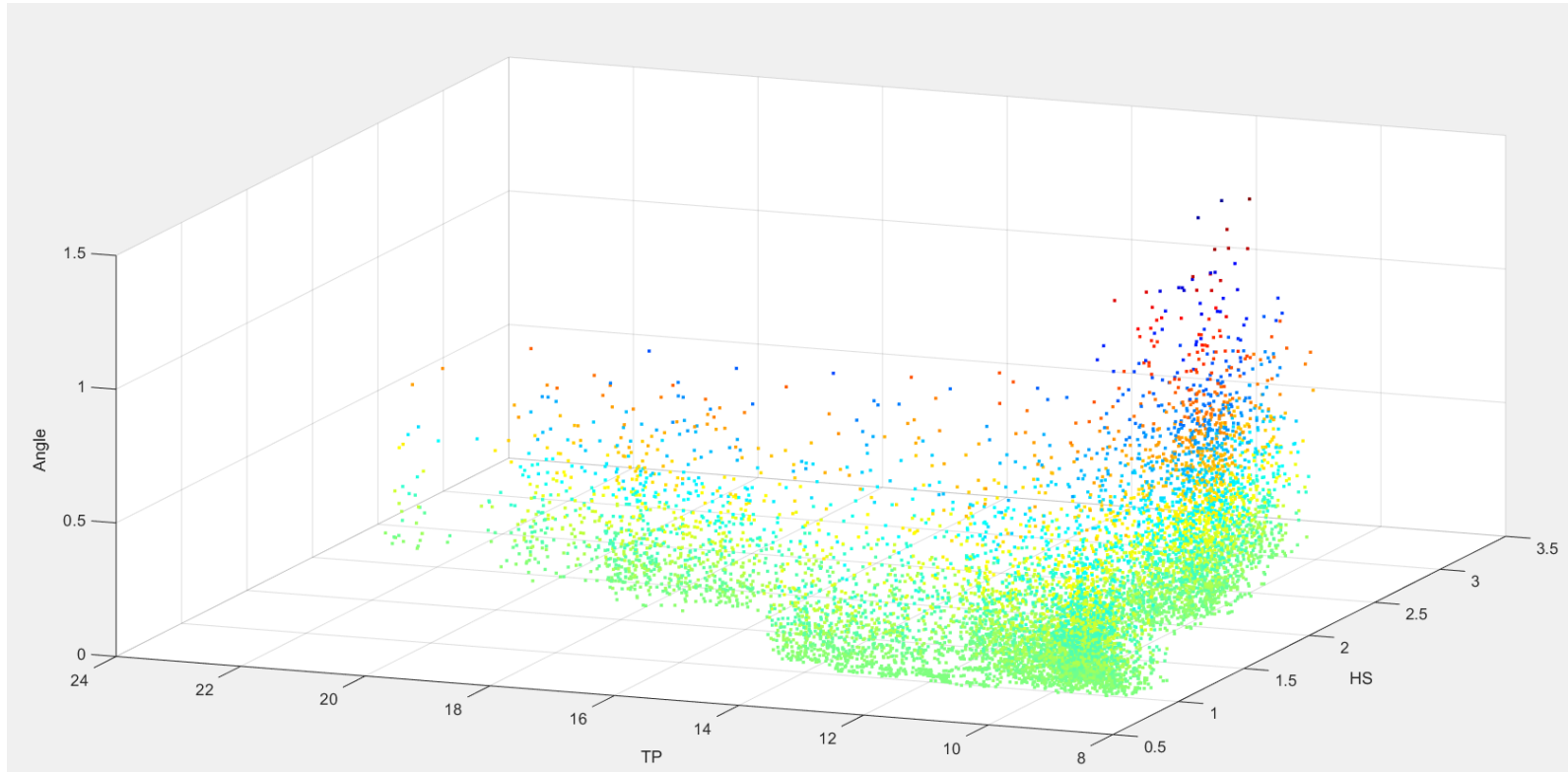
The cable got tangled during the storm, the coating was damaged

Challenge – missing data



The connector was submerged unblinded

Missing data

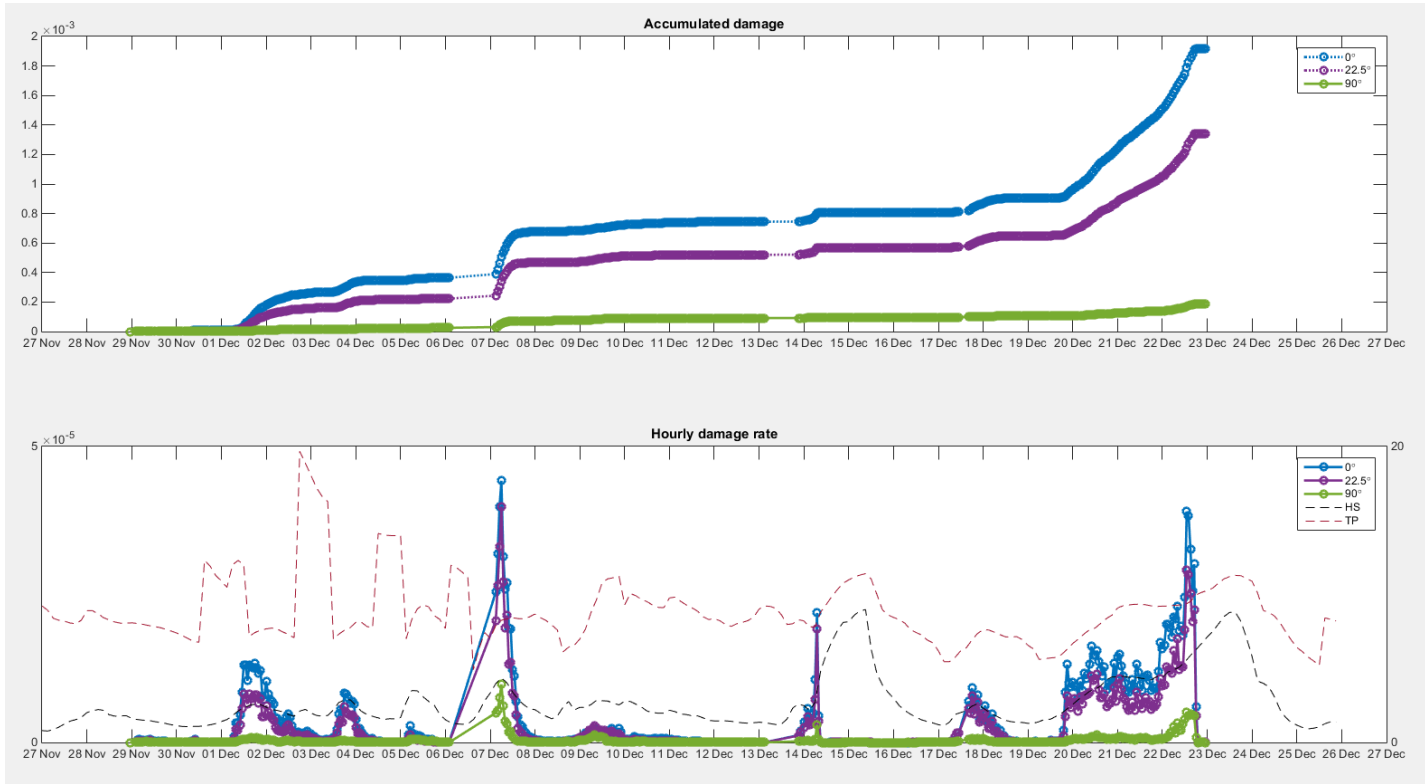


Calculating the fatigue damage

In the process of calculating fatigue damage we use following data:

- Data recorded using subsea sensors (H5 files)
- Well specific data – results from the local FE analysis (XML file)
- Weather data for the particular rig location (csv file)
- Rig specific data, size of the BOP, LMRP, XT etc

Results – accumulated damage



Main reasons for using MATLAB

- Popular across the company
- Built-in support for source control systems
- Easy to share code/tools with other
- Support for the technologies and concepts we use
- Worldwide user community
- Support for cloud solutions

References

- DNV Method Statement <https://rules.dnvgl.com/docs/pdf/DNVGL/RP/2015-04/DNVGL-RP-0142.pdf>
- Russo M., Myhre E., Wolak U., Grytøyr G., "Measured wellhead loads during drilling operations – Paper 1 – data processing and preliminary results“, 2015
- Russo M., Reinås L., Sæther M., and Holden H., “Fatigue assessment of subsea wells for future and historical operations based on measured riser loads”, 2012
- Grytøyr G., Lindstad H., and Russo M., “Direct And Indirect Measurement Of Well Head Bending Moments”, 2015

Statoil. The Power of Possible



Statoil

Urszula Wolak
Senior Engineer Platform Technology
FT MMT RP

m: +47 94470351
e: uwo@statoil.com

©Statoil ASA

This presentation, including the contents and arrangement of the contents of each individual page or the collection of the pages, are owned by Statoil. Copyright to all material including, but not limited to, written material, photographs, drawings, images, tables and data remains the property of Statoil. All rights reserved. Any other kind of use, reproduction, translation, adaptation, arrangement, any other alteration, distribution or storage of this presentation, in whole or in part, without the prior written permission of Statoil is prohibited. The information contained in this presentation may not be accurate, up to date or applicable to the circumstances of any particular case, despite our efforts. Statoil cannot accept any liability for any inaccuracies or omissions.



Statoil